

Research Migration Project

<https://esim.fossee.in/research-migration-project>

Name of the participant : Manisharma Sugurthi

Title of the circuit : “Design and Simulation of Waveform Generators: Sawtooth and Triangular Waves for Advanced Circuit Applications”

University : Rajiv Gandhi University of Knowledge Technologies

Problem Statement : Generating accurate triangular and sawtooth waveforms is essential for applications in signal processing and timing circuits. This project focuses on designing and simulating these waveforms using operational amplifiers, leveraging eSim as an open-source tool to validate the designs and highlight its effectiveness in circuit development.

Circuit Diagram(s) :

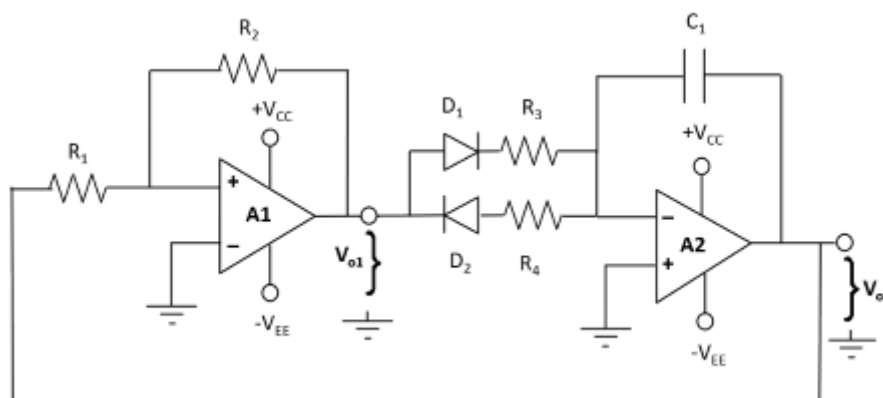


Fig !:Sawtooth Wave Generator

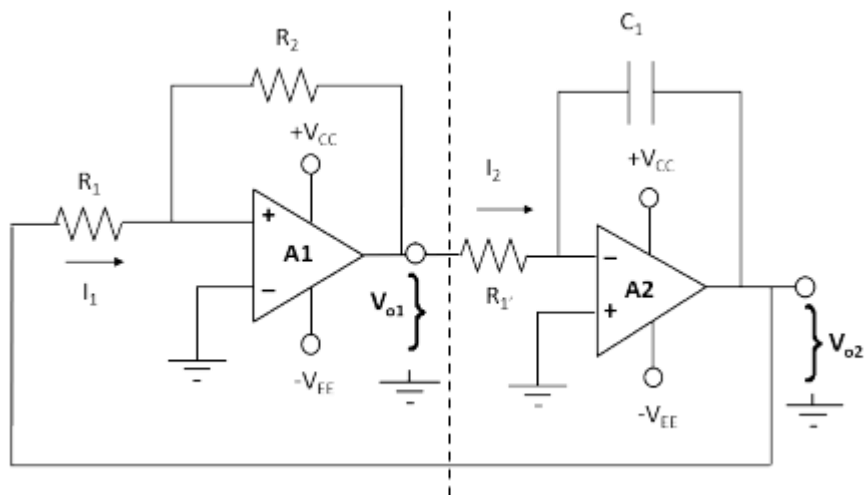


Fig 2: Triangular Wave Generator

Journals/Publications:

Sawtooth generator using two triangular waves

Authors: Nobukazu Takai & Yukihiro Fujimura

Source/Reference(s) :

D. Roy Choudhury and Snail Jain, "Linear Integrated Circuits", New Age International Private Limited, 2000