

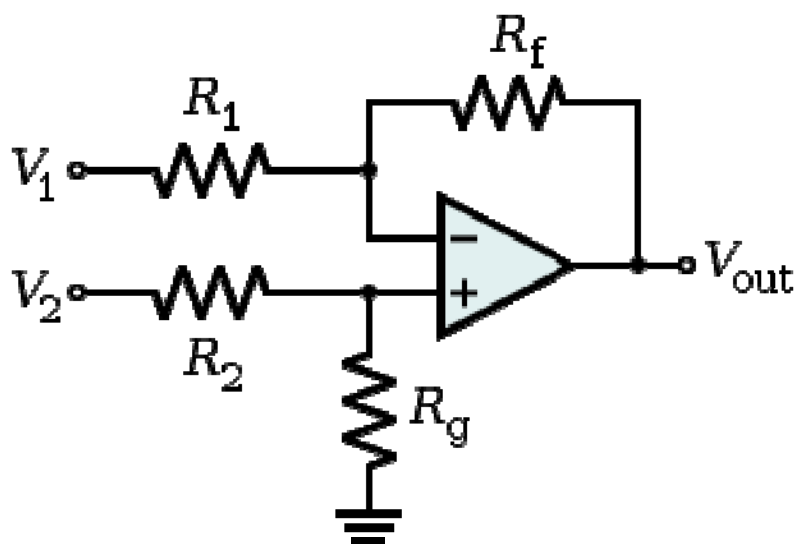
EXPERIMENT NO. - 6

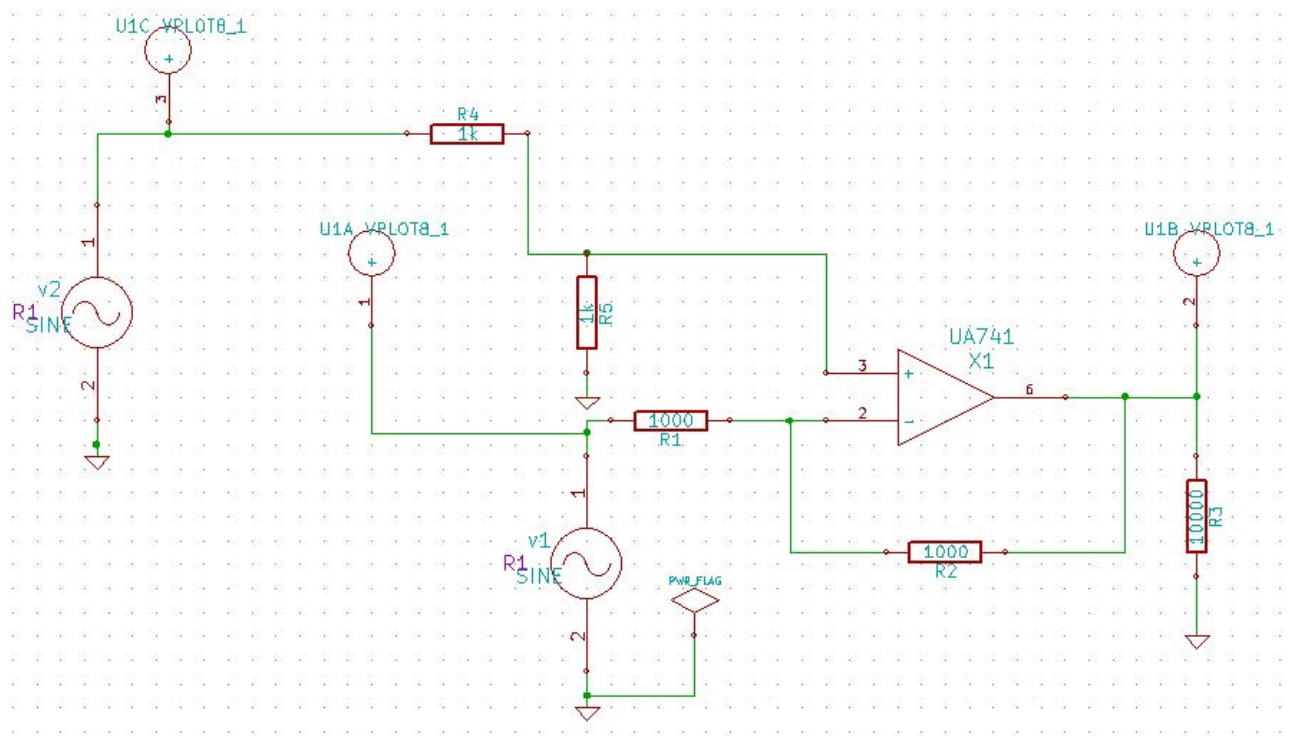
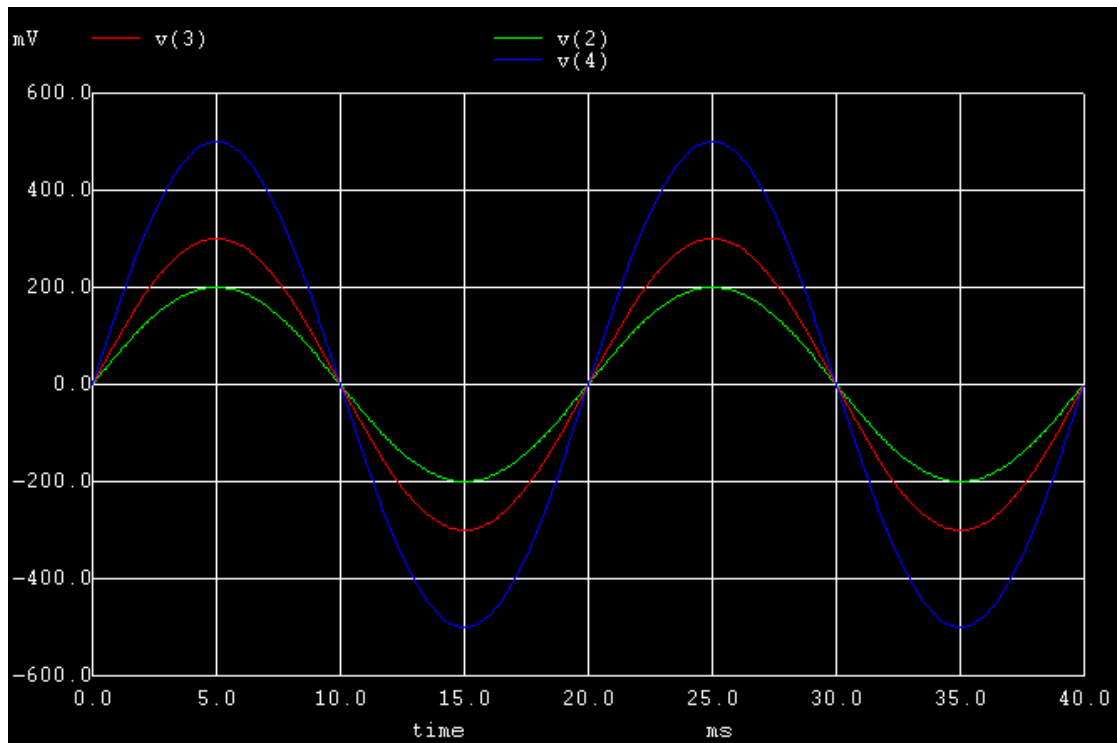
Aim of the Experiment:

Design, assemble and testing of Subtractor using op-amp

Theory:

All op-amps are “Differential Amplifiers” due to their input configuration. But by connecting one voltage signal onto one input terminal and another voltage signal onto the other input terminal the resultant output voltage will be proportional to the “Difference” between the two input voltage signals of V_1 and V_2 . This type of operational amplifier circuit is commonly known as a **Differential Amplifier** configuration



Schematic Circuit:**Input and Output Waveform:**

Conclusion:

Date:

Signature of the Student

NAME:

ROLL NO.:

GROUP ID:

SUB GROUP NO.:

Experiment Mark: / 20

Instructor's Signature